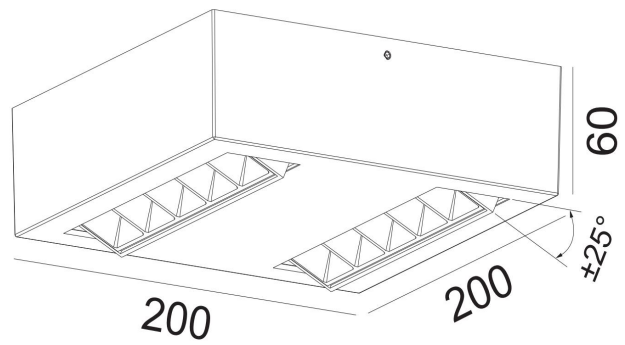


**Product Description:**

Range of Fresh series, Compact integrated and superior industrial design creates the perfect shape.

Adopting high quality LED chip. with pure light color and good color temperature consistency.

High grade LED driver with stable performance and longer lifespan.

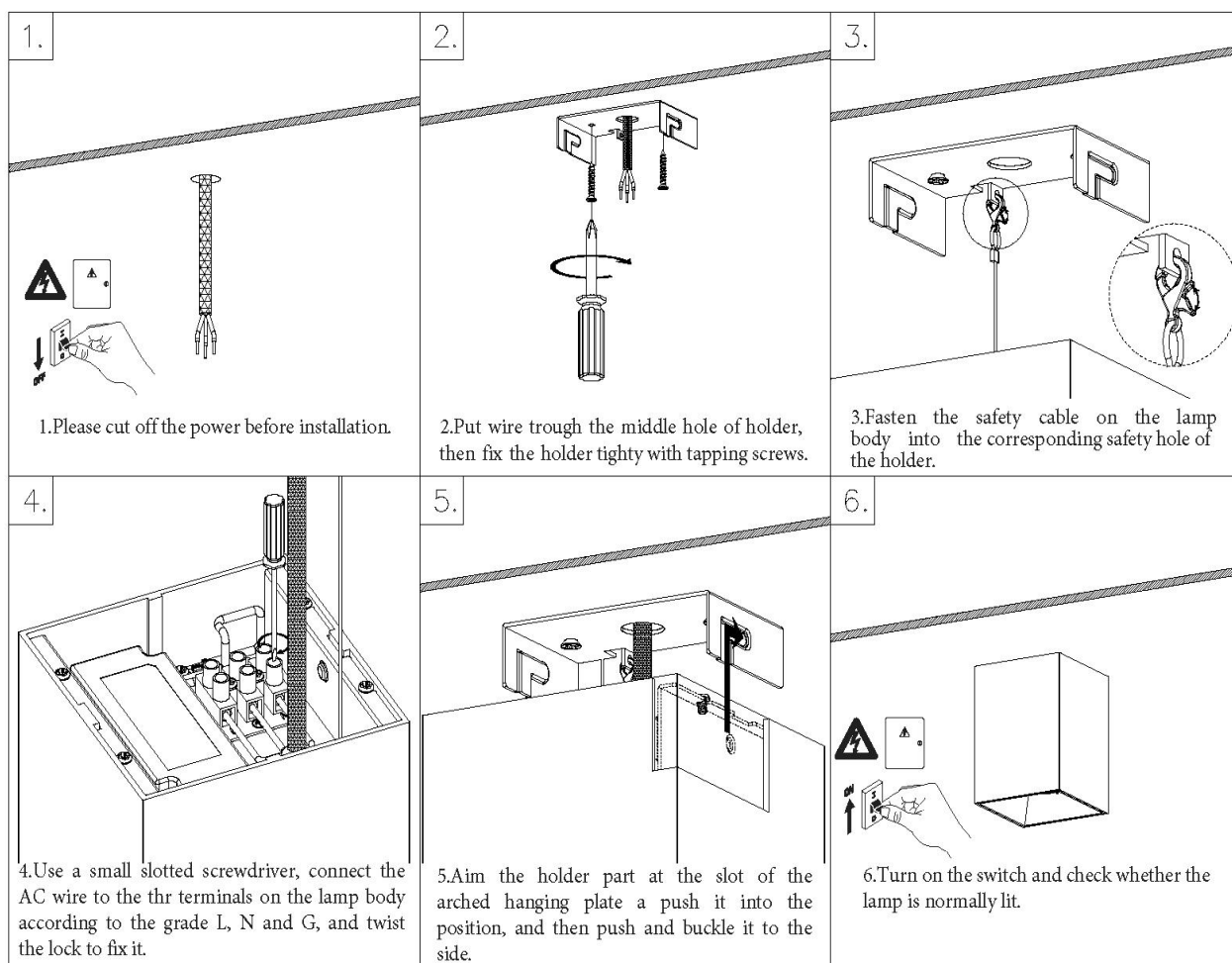
**Product Image:****5 year warranty****Different Colour Optional:****Product Specs:**

<b>LEDs Brand &amp; Type</b>	CREE COB	<b>Driver</b>	External driver
<b>Number of LEDs</b>	1	<b>Wattage</b>	15W
<b>Color Temperature</b>	2700K/3000K/4000K/5000K	<b>Input Voltage</b>	220-240V AC
<b>CRI</b>	80 / 90	<b>Input Frequency</b>	50/60HZ
<b>SDCM</b>	5	<b>Output Voltage</b>	36V
<b>Beam Angel</b>	25°/40°/50°	<b>Output Current</b>	330mA
<b>Luminous Flux</b>	2100~2200lm	<b>Power Factor</b>	0.9
<b>Life time L70 (hrs)</b>	40000	<b>Dimmable</b>	Triac/0-10V /Dali optional
<b>Optic Material</b>	Lens	<b>IP Rating</b>	IP20
<b>Recess Depth (mm)</b>	60	<b>Positional Adjustment</b>	Adjustable
<b>Overall Diameter (mm)</b>	200*200	<b>Ambient Temperature</b>	-25 °C < TA < 50 °C
<b>Cut Hole(mm)</b>	/	<b>Weight (Kg)</b>	1.65

**Warranty:**

This product has a warranty period of 5 Years. Warranties may be available on certain products as indicated in the product description. Warranties are valid from the date of purchase. The warranty is invalid in the case of improper use, installation, tampering, removal of the Q.C. date label or installation in an improper working environment or installation. Should this product fail during the warranty period it will be replaced free of charge, subject to the correct installation of the original product and subsequent return of the faulty unit. Fullamps does not accept responsibility for any installation costs associated with the replacement of this product and Fullamps reserves the right to alter specifications without prior notice.

## Installation:



## Things to know:

- Due to the different Voltage of lighting fixture, please select the appropriate. LED driver based upon the technical specification.
- Installation must be done by professional electrician.
- Please ensure the power has been cut off before installation, in order to prevent the electric shock, make sure the power supply that can't be resumed by anybody before the job done.
- This product should be installed together with fuse. The maintenance should be done by the professional.
- The defective ballast could not be treated as the normal rubbish and should be returned and make use of the normal parts.
- Please consult the authorized department or retailers for returned advice.