

## O/1-10V RF + Push Dimmer

Model No.: L11

RF dimming/O-10V or 1-10V/AC relay output/AC Push-Dim/Wall junction box mounting



CE RoHS LVD

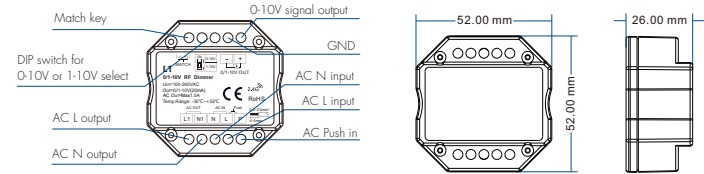
### Features

- O/1-10V RF or AC push dimmer, 1 channel output.
- Output 1 channel O/1-10V signal, connect with O/1-10V dimmable driver.
- High voltage AC input, High voltage AC relay output.
- O-10V or 1-10V output selectable by DIP switch.
- 256 levels O-100% dimming smoothly without any flash.
- Compatibility with RF 2.4G single zone or multiple zone dimming remote control.
- Connect with external push switch to achieve on/off and O-100% dimming function.
- Easy to be placed in standard wall junction box behind a push switch.

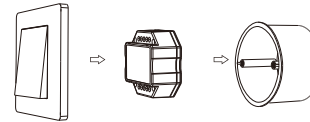
### Technical Parameters

Input and Output		Dimming data	
Input voltage	AC100-240V	Input signal	RF 2.4GHz + Push Dim
Output signal	O/1-10V (20mA)	RF Control distance	30m(Barrier-free space)
Output current	Max 1.5A [AC]	Dimming level	256 levels
		Dimming range	0-100%
Safety and EMC		Environment	
EMC standard [EMC]	EN 55015:2013 EN 61547:2009 EN 61000-3-2:2014 EN 61000-3-3:2013	Operation temperature	Ta: -30°C ~ +55°C
Safety standard [LVD]	EN 61347-2-11:2002 EN 61347-1:2015 EN 62493:2015	Case temperature (Max.)	Tc: +65°C
Certification	CE, EMC, LVD	IP rating	IP20
		Warranty	
		Warranty	5 years

### Mechanical Structures and Installations

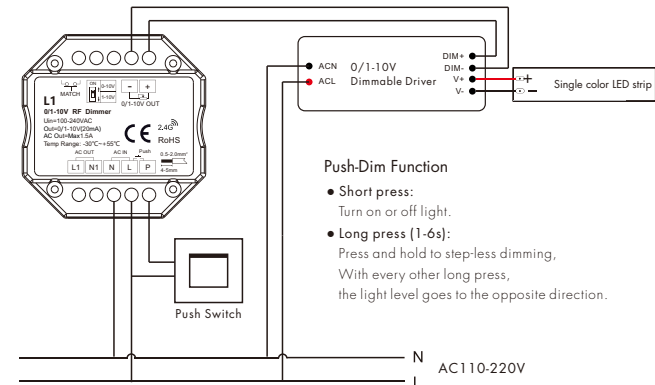


### Typical Wall Junction Box Mounting

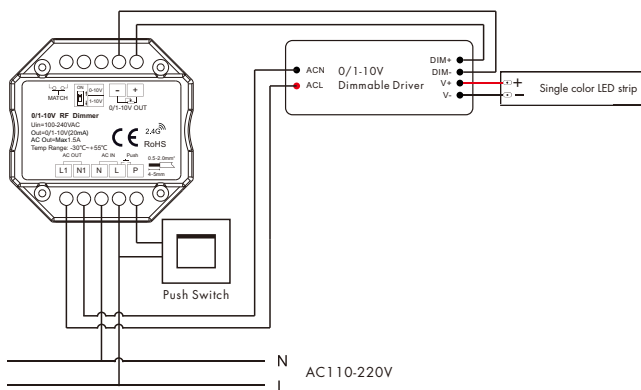


### Wiring diagram

- Connect with O/1-10V dimming driver (no use AC OUT)

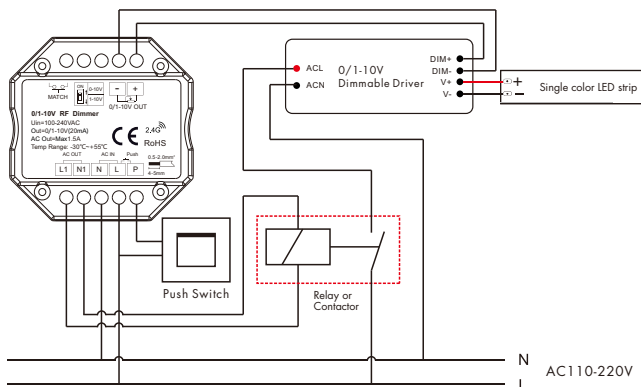


- Connect with 0/1-10V dimming driver (use AC OUT)



- Connect with 0/1-10V dimming driver (use AC OUT and relay or contactor)

An additional AC relay or contactor is needed when total input current of the load is higher than 1.5A or inrush current is greater than 15A.

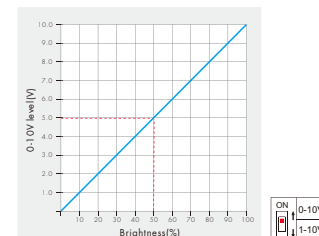


**Note:** We recommend the number of LED drivers connected to 0/1-10V dimmer does not exceed 20 pieces, The maximum length of the wires from dimmer to LED driver should be no more than 30 meters.

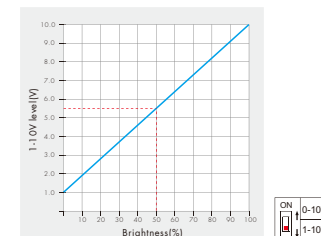
## 0-10V or 1-10V dimming setting

Select 0-10V dimmer or 1-10V dimmer according to dimmable LED driver.

### 0-10V Dimmer

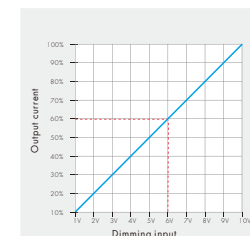


### 1-10V Dimmer



**Note:**

When the output channel is off, the output dimming signal is 0V or 1V. Please read the dimming section of the dimming driver manual. If the dimming characteristic curve is the same as right, you must select 1-10V dimmer and use AC OUT function, otherwise you can't turn off the lights.



## Match Remote Control (two match ways)

End user can choose the suitable match/delete ways. Two options are offered for selection:

### Use the controller's Match key

**Match:**

Short press match key, immediately press on/off key (single zone remote) or zone key (multiple zone remote) of the remote.

**Delete:**

Press and hold match key for 5s to delete all match, The light blinks 5 times means all matched remotes were deleted.

### Use Power Restart

**Match:**

Switch off the power, then switch on power again, immediately short press on/off key (single zone remote) or zone key (multiple zone remote) 3 times on the remote. The light blinks 3 times means match is successful.

**Delete:**

Switch off the power, then switch on power again, immediately short press on/off key (single zone remote) or zone key (multiple zone remote) 5 times on the remote. The light blinks 5 times means all matched remotes were deleted.