

Product Description:

Range of Fresh series, Compact integrated and superior industrial design creates the perfect shape.

Adopting high quality LED chip. with pure light color and good color temperature consistency.

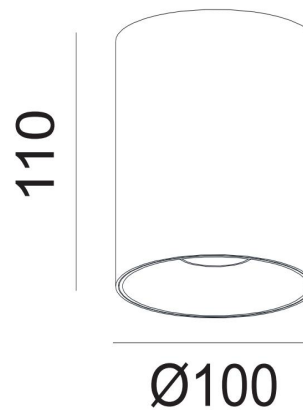
High grade LED driver with stable performance and longer lifespan.

5 year warranty

Different Colour Optional:



Product Image:



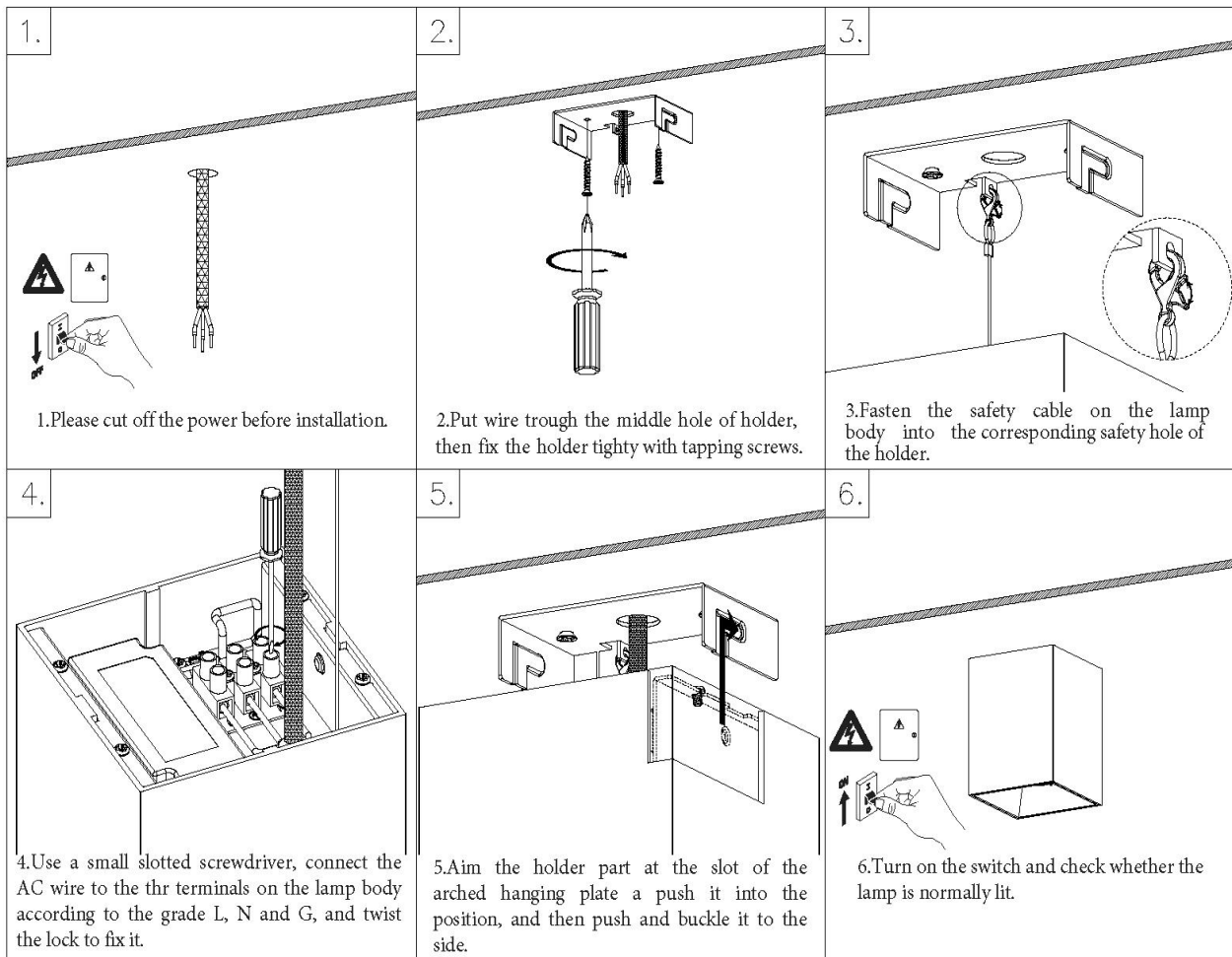
Product Specs:

LEDs Brand & Type	CREE COB	Driver	External driver
Number of LEDs	1	Wattage	10W
Color Temperature	2700K/3000K/4000K/5000K	Input Voltage	220-240V AC
CRI	80 / 90	Input Frequency	50/60HZ
SDCM	5	Output Voltage	36V
Beam Angel	25°/40°/50°	Output Current	330mA
Luminous Flux	600~700lm	Power Factor	0.9
Life time L70 (hrs)	40000	Dimmable	Triac/0-10V /Dali optional
Optic Material	Lens	IP Rating	IP20
Recess Depth (mm)	110	Positional Adjustment	Adjustable
Overall Diameter (mm)	110	Ambient Temperature	-25 °C < TA < 50 °C
Cut Hole(mm)	/	Weight (Kg)	0.64

Warranty:

This product has a warranty period of 5 Years. Warranties may be available on certain products as indicated in the product description. Warranties are valid from the date of purchase. The warranty is invalid in the case of improper use, installation, tampering, removal of the Q.C. date label or installation in an improper working environment or installation. Should this product fail during the warranty period it will be replaced free of charge, subject to the correct installation of the original product and subsequent return of the faulty unit. Fullamps does not accept responsibility for any installation costs associated with the replacement of this product and Fullamps reserves the right to alter specifications without prior notice.

Installation:



Things to know:

- Due to the different Voltage of lighting fixture, please select the appropriate. LED driver based upon the technical specification.
- Installation must be done by professional electrician.
- Please ensure the power has been cut off before installation, in order to prevent the electric shock, make sure the power supply that can't be resumed by anybody before the job done.
- This product should be installed together with fuse. The maintenance should be done by the professional.
- The defective ballast could not be treated as the normal rubbish and should be returned and make use of the normal parts.
- Please consult the authorized department or retailers for returned advice.